

MASTERLINX™ ENTERPRISE MANAGEMENT SYSTEM

MASTERLINX™

FIXEDLINX
COMPONENTS



Master Meter TDS (Technology Driven Solutions), Inc., formerly Greentree Applied Systems, provides meter reading and data software solutions to the utility industry with a client roster of over 1,000 utilities. As an integral part of our new FixedLinX fixed network system, Master Meter TDS has developed the MasterLinX™ Enterprise Management System which incorporates our knowledge and years of experience in the utility industry into one browser based solution with modules for meter, customer and financial data. The Meter Data Management module is being released with our FixedLinX™ fixed network meter reading system.

ROBUST ARCHITECTURE

* MasterLinX Enterprise™ uses the latest in advanced “parallel” computing technology to maximize the efficiency of new generation multi-core Intel® processors. This technology ensures MasterLinX will make the most efficient use of the servers you purchase. Advanced “cloud” computing technology enables you to scale from 1 to 400 servers with little more than a configuration file change, and grow from 500 to 2,000,000 end user customers.

SOFTWARE-AS-A-SERVICE (SAAS)

* MasterLinX is offered as an internet service (SaaS) hosted in a secure data center, or as a Microsoft IIS private intranet application hosted by the system end user (utility). Both platforms require limited workstation hardware and internet browser software like no cost Microsoft Internet Explorer 7. For locally hosted systems, the size of the utility and the number of modules purchased will determine the number and type of servers required.

SaaS (typically pronounced ‘Sass’) is a software application delivery model where Master Meter TDS hosts, operates, and provides access via the internet of its web-native MasterLinX Software Solution. Customers do not pay for owning the software itself but rather for using it.

* BENEFITS:

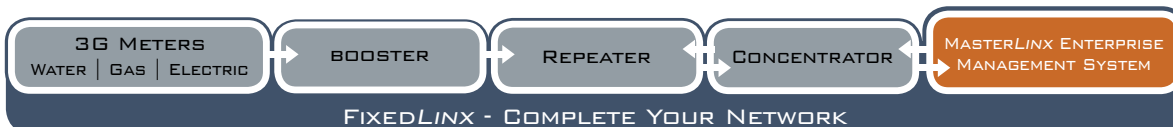
- Faster deployment times
- No up-front license and limited infrastructure costs
- Get up and running quickly and receive direction with ease thanks to the flexible modular design
- Ability to address everyday business processes (read-bill-collect) so that you can focus resources on processes and projects that make a real difference in your organization

DATA CENTER HOSTED SOLUTION

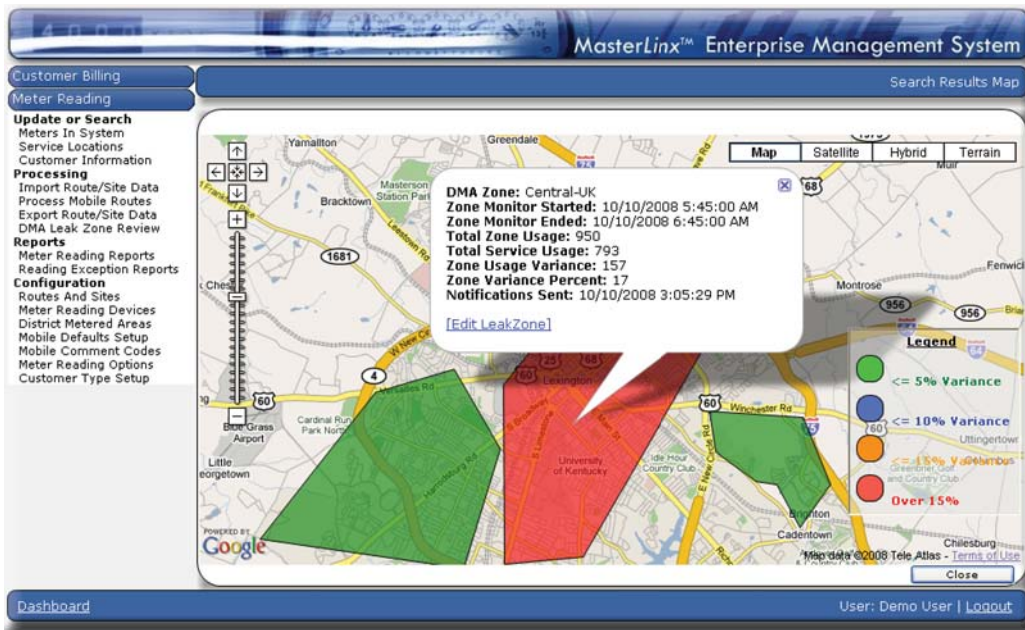
* MasterLinX software is offered optionally as an internet service for an annual subscription fee. The MasterLinX system software, database and application servers are located in a secure state-of-the-art Data Center. The data center provides TCP/IP redundancy using three Tier 1 fiber optic connections to the internet with load balancing and automatic routing should one of more of the internet connections fail. The facility power is conditioned using large uninterruptible power supply (UPS) units with short term battery backup and long term backup using a two megawatt generator with 1,500 gallons of fuel on-site. Temperature and humidity are controlled with redundant HVAC units.

LOCAL SYSTEM HOSTED SOLUTION

* Alternately the MasterLinX system software, database and application server(s) can be purchased and maintained by a local utility IT department. Locally hosted systems collect data directly from the Concentrator and do not receive the benefits of the Operational Data Store and Data Center. For locally hosted systems, the size of the utility will determine the number and capacity of servers required. We encourage considering the benefits of our hosted system and comparing the on-going cost to provide the same level of system redundancy and system availability.



SYSTEM APPLICATION MODULES



METER DATA MANAGEMENT: The Meter Reading module provides a complete fixed network management solution presenting end users with meter data including data logging, daily readings, billing reads, revenue impact alerts and DMA (District Metered Areas) Leak Zone data processing results. Using tables, graphs, maps and a web based reporting system data is accessible to managers, utility employees and customer service representatives from any computer with internet access. A consumer internet portal is also provided to give customer

service representatives the ability to review utility usage with consumers on-line while on the phone and can eliminate the trips and meter testing often associated with customer complaints over high use bills.

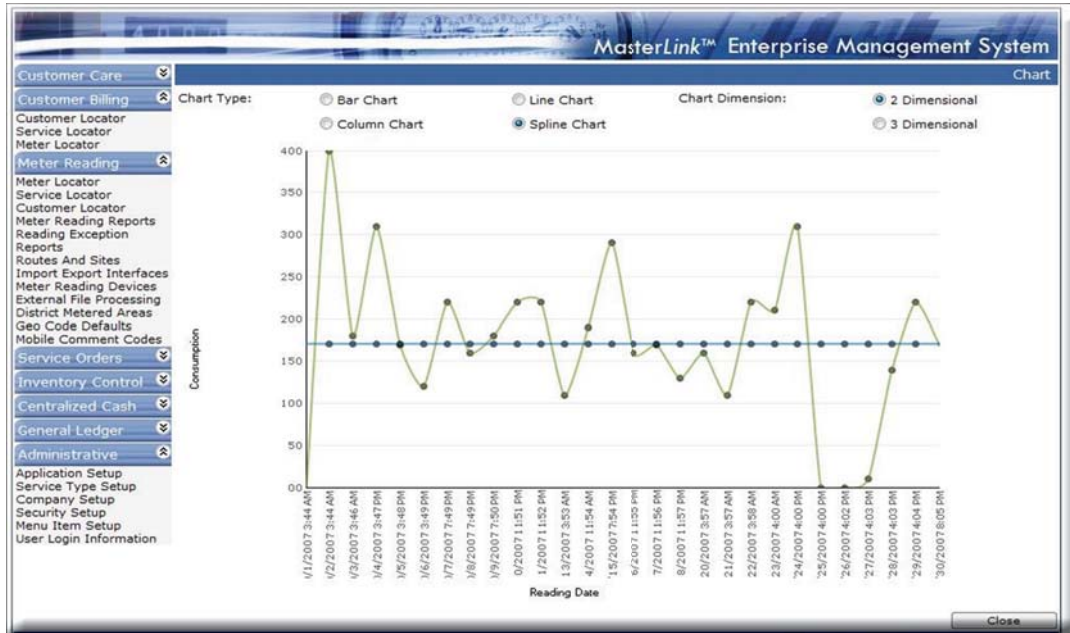
As with all our meter reading systems, a customizable interface is provided to provide integration with third party or custom in-house billing systems. For utilities desiring greater integration with existing systems our software development group has the experience and 'can do' attitude required to achieve your goals.



CUSTOMER CARE CALL CENTER: This enterprise-wide solution records, manages and tracks Customer contacts. As calls are received, they are categorized and details about the call recorded. Should a follow-up task be required a follow-up code and date required are entered. This call center manages the tasks required to resolve the complaint and provides detail and summary reports to analyze the information.

SERVICE ORDERS: A Service Order module is provided and shares common files like service location, meters and customer files. The module facilitates and controls changes made to utility accounts. Service Orders will enable you to initiate customer service, discontinue service, modify service, change out meters, transfer occupants and much more. Any changes managed through Service Orders are automatically updated to the customer billing system.

“MasterLinx is intuitive and easy to adopt into our ongoing operations. It makes Meter Data Management (MDM) a snap.”



CUSTOMER BILLING: The MasterLinx Customer Billing module is extremely powerful with a premium placed on ease of use. The system is designed to facilitate metered and non-metered billing. Current customers use the system to bill for

electricity, gas and water metered services. There is support for an unlimited number of rate codes whether simple or complex including tax and surcharge calculations.

The screenshot shows the MasterLinx Enterprise Management System search interface. It includes search criteria for Meter Serial Number, Meter Electronic Number, Device, Service Type, Route-Site Name, and Street Name. A 'Search' button and a 'Max. 500' limit are visible. Below the search criteria is a table of search results.

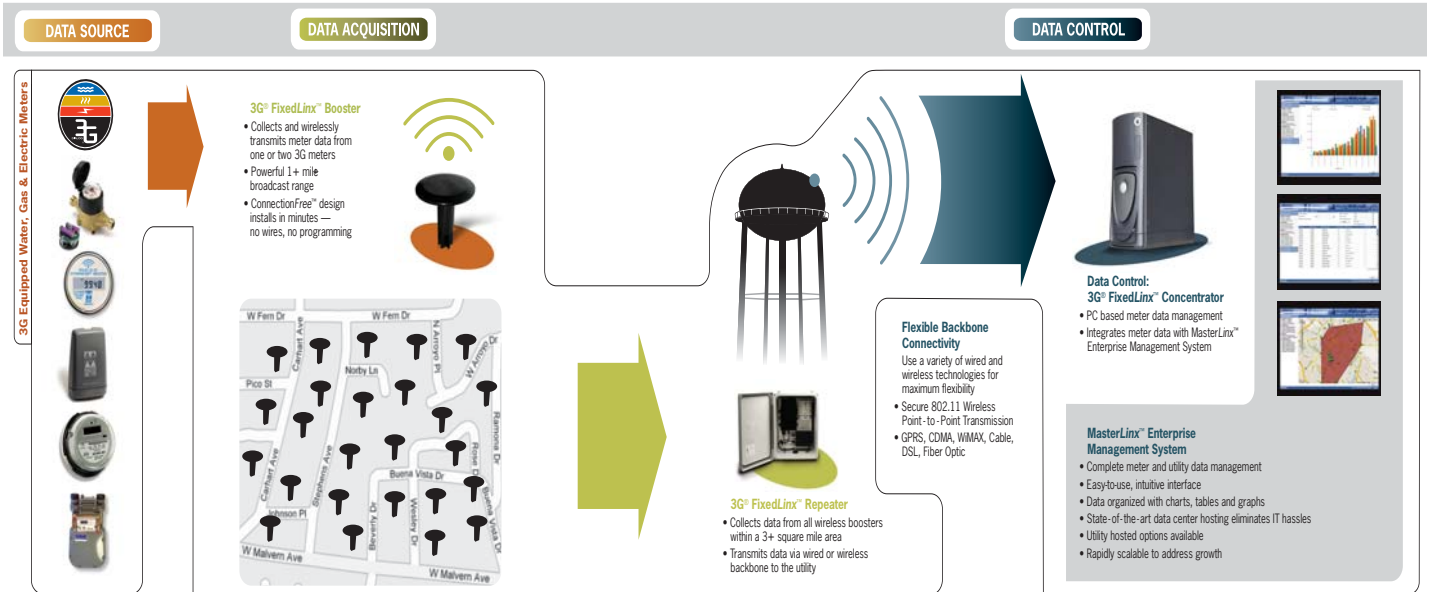
Electronic ID	Meter SN	Last Read Date	Last Read	Status	Service Address	Customer Name
4306198	12345	06/14/2007 01:54 PM	1902	Tamper	No: Assigned	Not Assigned
3712844	123456789	06/14/2007 03:55 PM	70983	OK	No: Assigned	Not Assigned
4164453		06/14/2007 03:55 PM	10268	OK	No: Assigned	Not Assigned
11594197		06/07/2007 06:40 AM	430968971	OK	No: Assigned	Not Assigned
3591108		06/14/2007 03:55 PM	5566	OK	No: Assigned	Not Assigned
4247215		06/07/2007 10:47 AM	17206327	OK	No: Assigned	Not Assigned
4301173		06/14/2007 02:09 PM	1784	OK	No: Assigned	Not Assigned
3527806		06/07/2007 02:54 PM	6073	OK	No: Assigned	Not Assigned
14136		06/13/2007 03:04 PM	785	OK	No: Assigned	Not Assigned
227162		06/12/2007 02:03 PM	10098	OK	No: Assigned	Not Assigned
3651659		06/14/2007 03:55 PM	2121	OK	No: Assigned	Not Assigned

You reached the 500 record limit.

CENTRALIZED CASH: Centralized Cash Collection interfaces with the Customer Billing module and allows payments to be received at multiple locations for unlimited revenue centers like utility billing, parking permits, business tax, etc. This module provides a seamless and uniform interface, regardless of the type of payment being received that can be implemented over a wide-area-network or the internet. Centralized Cash Collections

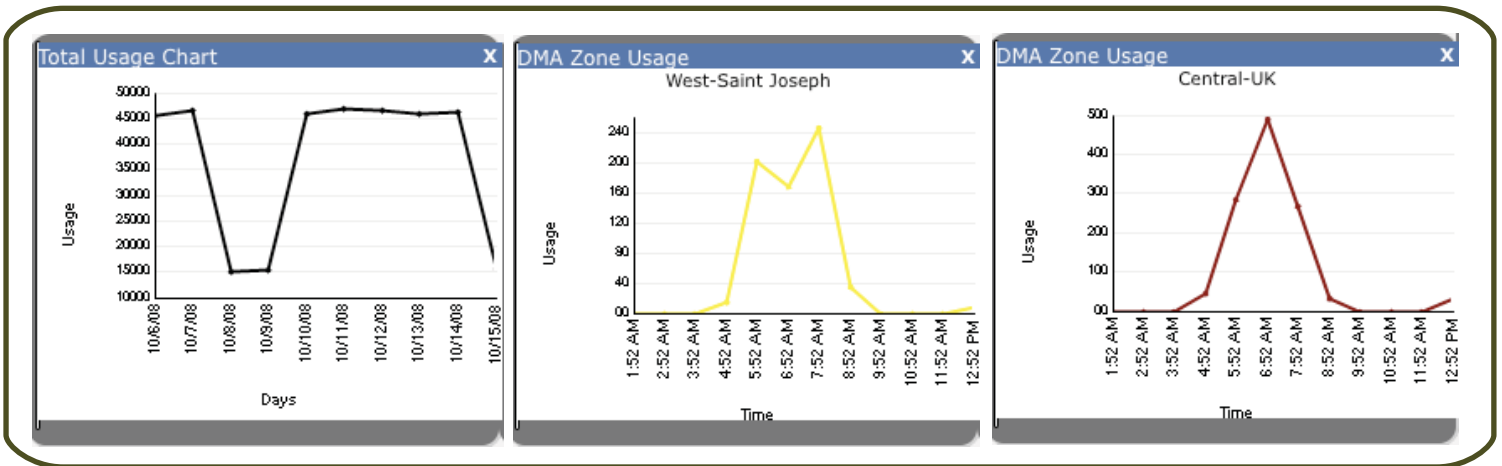
will help each cashier manage his or her drawer and provides receipt printing. At the end of the day, simply verify the work and update the other modules with the payments collected.

FIXEDLINX INTEGRATED AMI ARCHITECTURE



MASTERLINX DASHBOARD PANELS™

* MasterLinx Dashboard Panels™ provide an immediate sweep of key operational and bottom line information



Master Meter, Inc.
 101 Regency Parkway, Mansfield, TX 76063
 Toll Free: 800-765-6518 • Main Line: 817-842-8000 • FAX: 817-842-8100
 MASTERMETER.COM



©2008 Master Meter, Inc. All rights reserved. DIALOG, INTERPRETER, and Master Meter are registered trademarks of Master Meter, Inc. Master Meter reserves the right to make modifications to the products described herein at any time and without notice. U.S. Patent Nos. 7,135,986; 6,819,292; 6,954,178; and others pending.

GENERAL LEDGER: The MasterLinx General Ledger offers a comprehensive solution that simplifies your data processing. All MasterLinx financial applications like Customer Billing and Centralized Cash automatically interface to the General Ledger, reducing your need to manually update. With its flexible account structure including funds and departments and browser interface, the Greentree General Ledger is the firm foundation for all our financial modules.



BUDGET PREPARATION: Budget Preparation is integrated with and included in the General Ledger module and allows for multiple versions of a budgets to be created. The system support a budget status of Requested, Preliminary and Adopted to facilitate a “Work In Process” until a the final budget is adopted. Fund and Department budgets may be worked and presented separately or combined if so desired. All information entered into the Budget Preparation module flows through to the General Ledger for inquiry throughout the fiscal year.



PAYROLL: The Payroll system is both comprehensive and easy to use. This system tracks information that is required for maintaining compliance with applicable laws and tax reporting requirements. The processing is performed on an exception basis, so only employees with exceptions to their normal payroll have to be edited. The payroll integrates with General Ledger departments and employee time can be allocated to multiple departments. The module supports electronic direct deposits.



ACCOUNTS PAYABLE: This module helps automate and streamline the input and payment processing function. Accounts Payable is fully integrated with the General Ledger and Purchase Order module and supports cash, accrual, and modified accrual-basis accounting. Included are comprehensive reports, item processing tools, and audit trails to help manage and secure the payable process.



PURCHASE ORDERS & REQUISITIONS: The Purchase Order module provides multiple levels of user-defined approval. The system validates budget availability and account authorization at the time of input. Full integration with the General Ledger provides automatic creation and liquidation of encumbrances as the purchase orders are processed and invoices received against them. The system allows for partial and full receipting, as well as voiding outstanding purchase orders. Purchase Orders are integrated with Accounts Payable to eliminate redundant entry of invoices that are received.



FIXED ASSETS: Our Fixed Asset module provides the automation necessary to track and manage your fixed assets, including improvements and infrastructure. The system allows for managing assets by their original serial number (if applicable) as well through the use of a defined tag number. Assets may be depreciated if desired and several different depreciation methods are included.



INVENTORY CONTROL: Inventory Control is a solution for entities which maintain an in-house inventory. This module keeps track of inventory in multiple locations, monitors usage, prompts at re-order points and maintains average cost of goods. The system is integrated with the General Ledger, so receipts and disbursements are automatically reflected in the financial statements.

“MasterLinx modules unlock new frontiers in customer value, actionable business intelligence (BI), and relationship building between the utility and their customer.”

